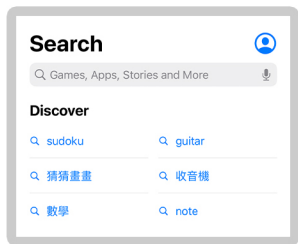




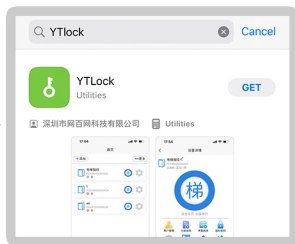
**YTLock**

**Operation manual**

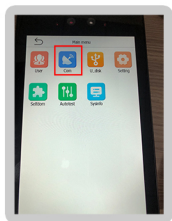
1 Search for "YTLock" in the app store to download it.



Open the app store



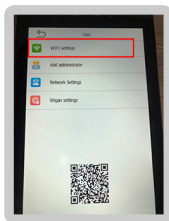
Search for "YTLock" to download



1. Double-click the screen to enter the menu, Click "Com".

The default common password is 123456

Default password: 7890

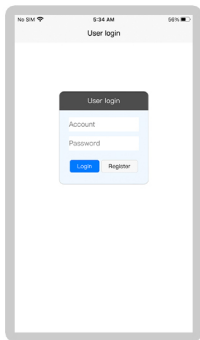


2. Click "WiFi Settings" and distribution network (4G/TCP can skip this step) After the access control device is successfully configured, return to the "Com" page



3. Click "Add administrator", and open the APP code scanning device binding

**2** Open the "YTLock" APP, register and log in

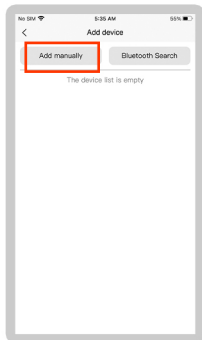
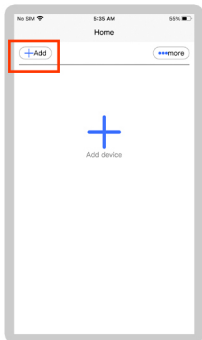


**3**

**4**

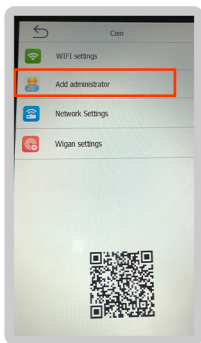
**Enter the APP and click "Add"**

**Click "Add manually"**



5

The device returns to the "Com" page. Click "Add administrator"



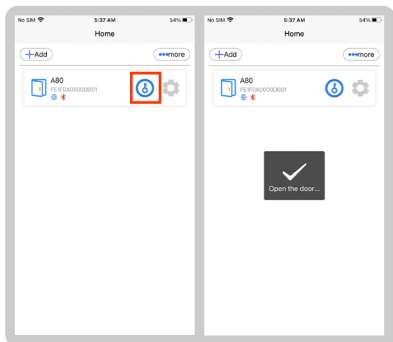
6

Enter the device name, Mac address, scan the QR code on the device, and Click "Add".

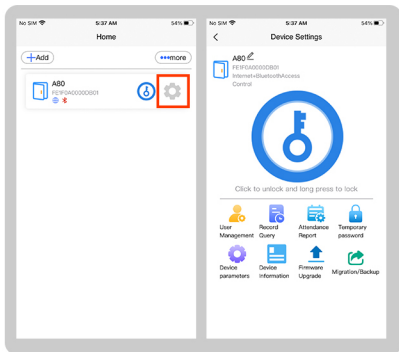


7

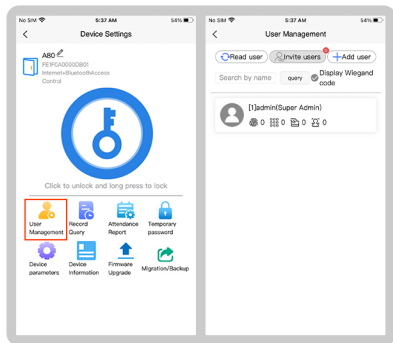
Return to the home page of the APP and click "Key" to open the door remotely.



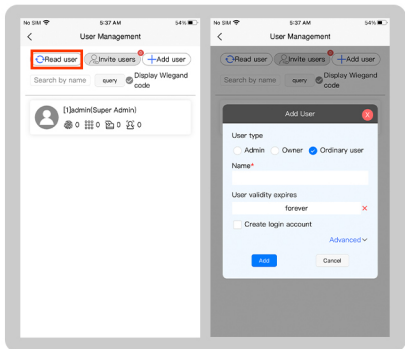
## 8 Click Set Manage Device



## 9 Click "User Management" to manage users



- 10 Click "Add User" to add a new user, Select "User Type", enter the user name, and click "Add".



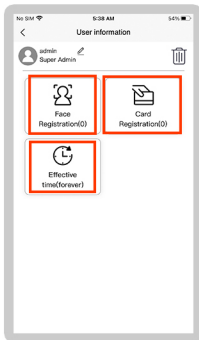
11

Click an added user to modify the user information.



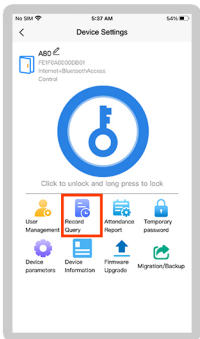
12

Click to add/delete user information



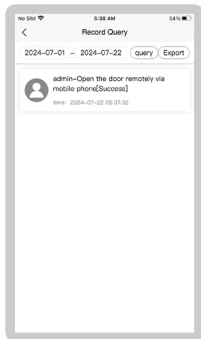
13

Click "Record Query" to view the door opening record



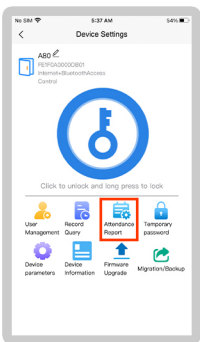
14

You can select a time range and export records



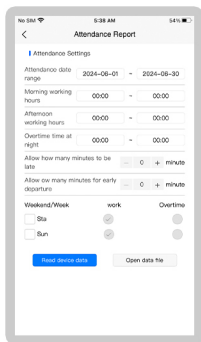
15

Click "Attendance Report"



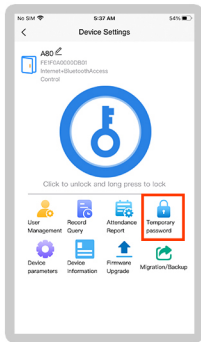
16

Set the attendance, set the time to work, and export the attendance report



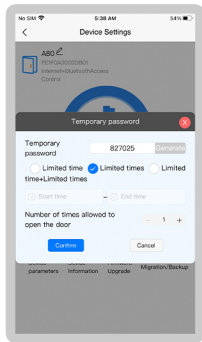
17

Click "Temporary password" to share the door with friends who do not have permission

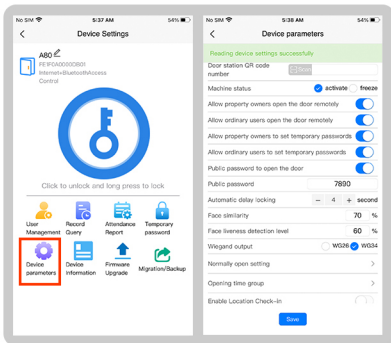


18

Temporary password can be set for a limited time



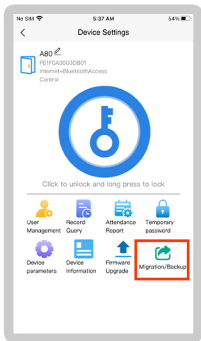
19 Click Set Parameters to modify "Device parameters"





20

Click "Migration/Backup"



21

Migrate/Backup Allows you to migrate/backup all users or select some users

